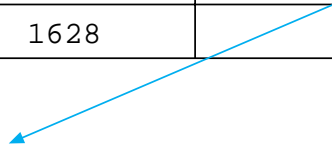




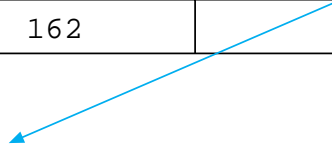
CALL PrintReverse(16285)

Number	LeftDigits	CALL PrintReverse(LeftDigits)	Output
16285	1628	Inductive Step	5



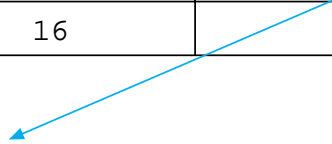
CALL PrintReverse(1628)

Number	LeftDigits	CALL PrintReverse(LeftDigits)	Output
1628	162	Inductive Step	5 8



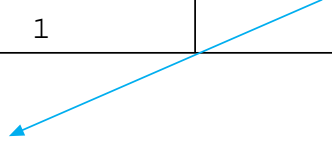
CALL PrintReverse(162)

Number	LeftDigits	CALL PrintReverse(LeftDigits)	Output
162	16	Inductive Step	5 8 2



CALL PrintReverse(16)

Number	LeftDigits	CALL PrintReverse(LeftDigits)	Output
16	1	Inductive Step	5 8 2 6



CALL PrintReverse(1)

Number	LeftDigits	PRINT *	Output
1	0	Anchor	5 8 2 6 1