



IDIS110

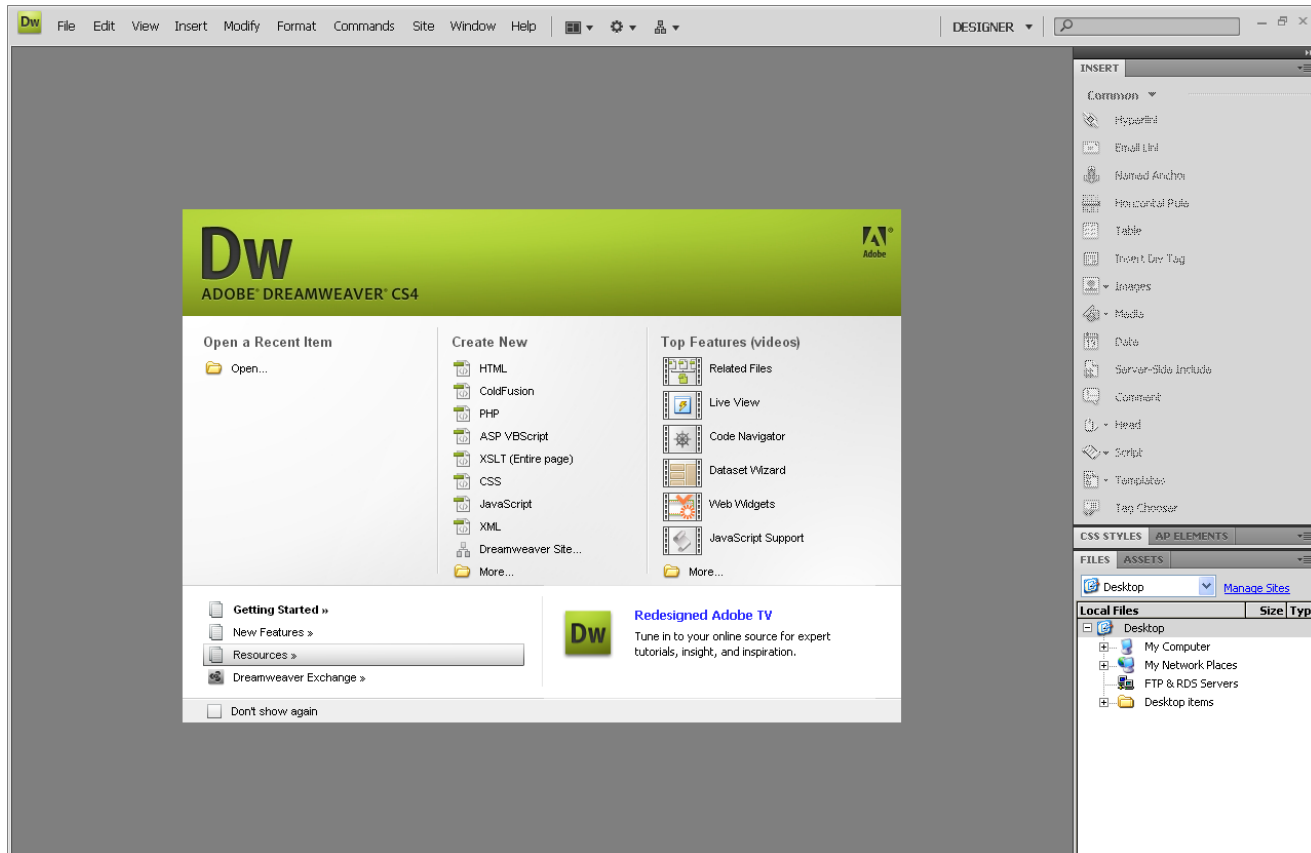
Dreamweaver Setup

Patrick Bailey, MS



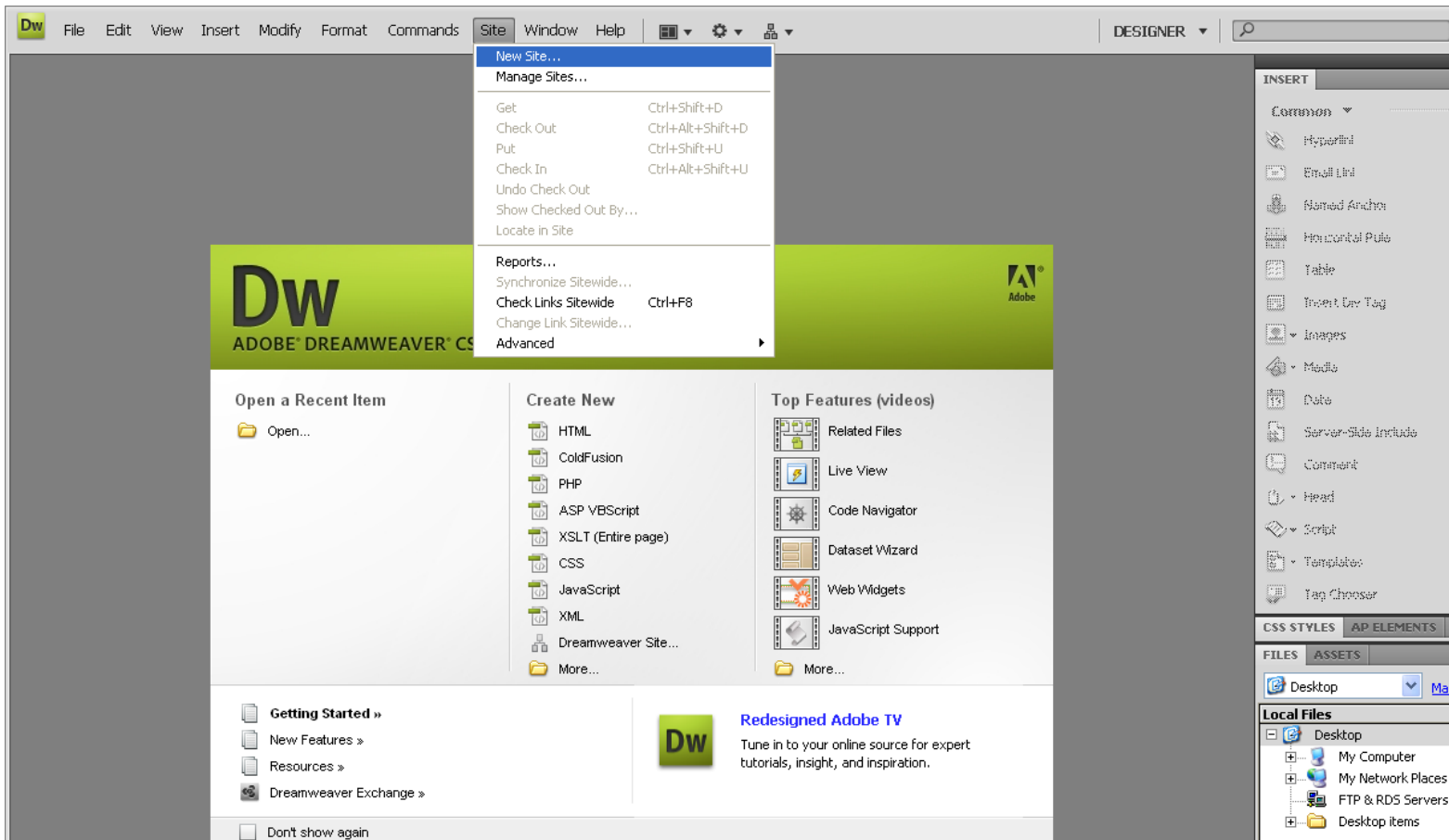
After you start Dreamweaver

On the first use of Dreamweaver, if you are asked, select “Design Mode” Otherwise, it should look similar to the following.





First, create a new site. Click on Site->New Site





You should see something like this....

Key in the name

Identify the folder where you have you will create your website.

Site Setup for My Web Site

Site
Servers
Version Control
▶ Advanced Settings

A Dreamweaver site is a collection of all of the files and assets you use in your website. A Dreamweaver site usually has two parts: a local folder on your computer where you store and work on files, and a remote folder on a server where you post the same files to the web.

Here you'll select the local folder and a name for your Dreamweaver site.

Site Name:

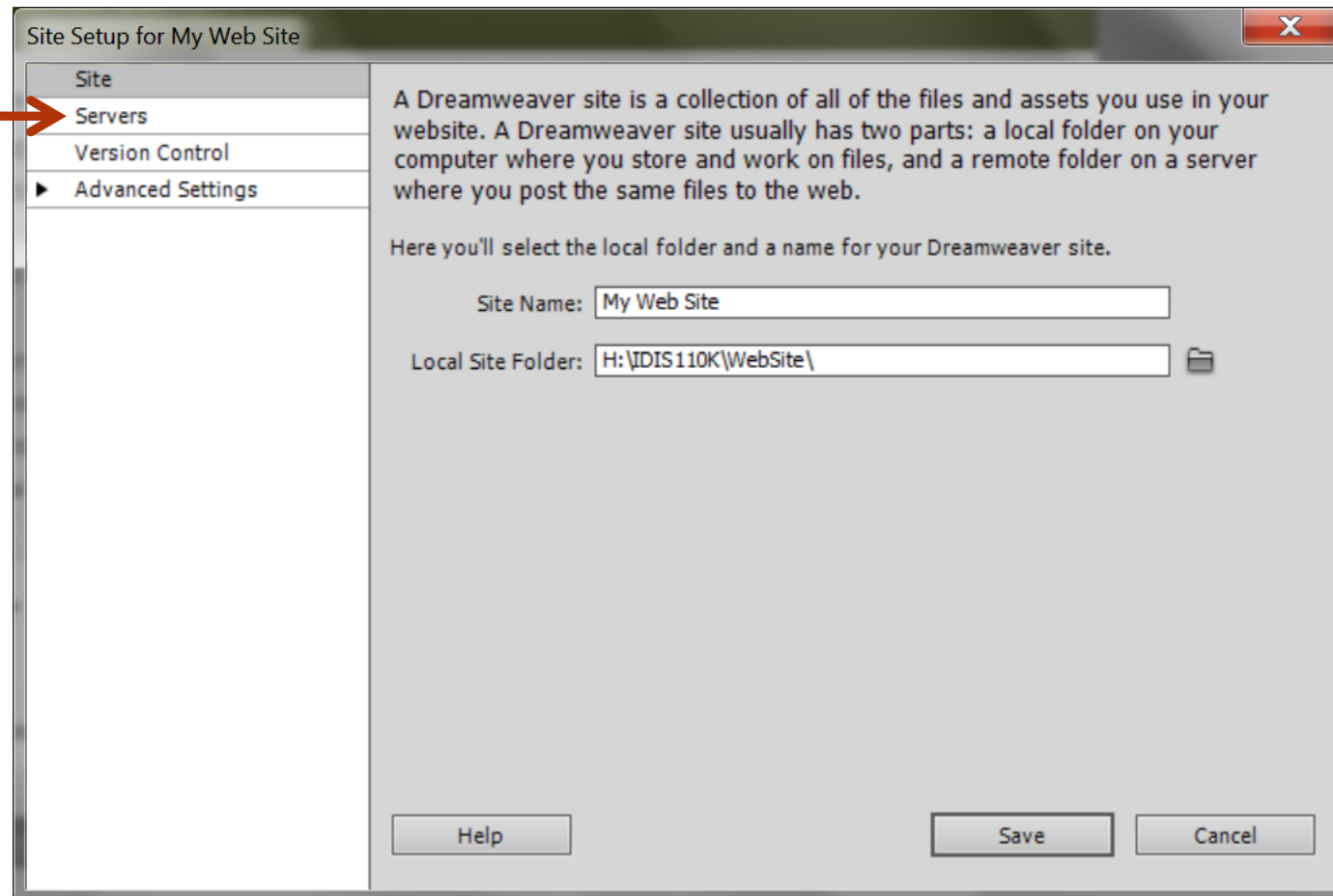
Local Site Folder:

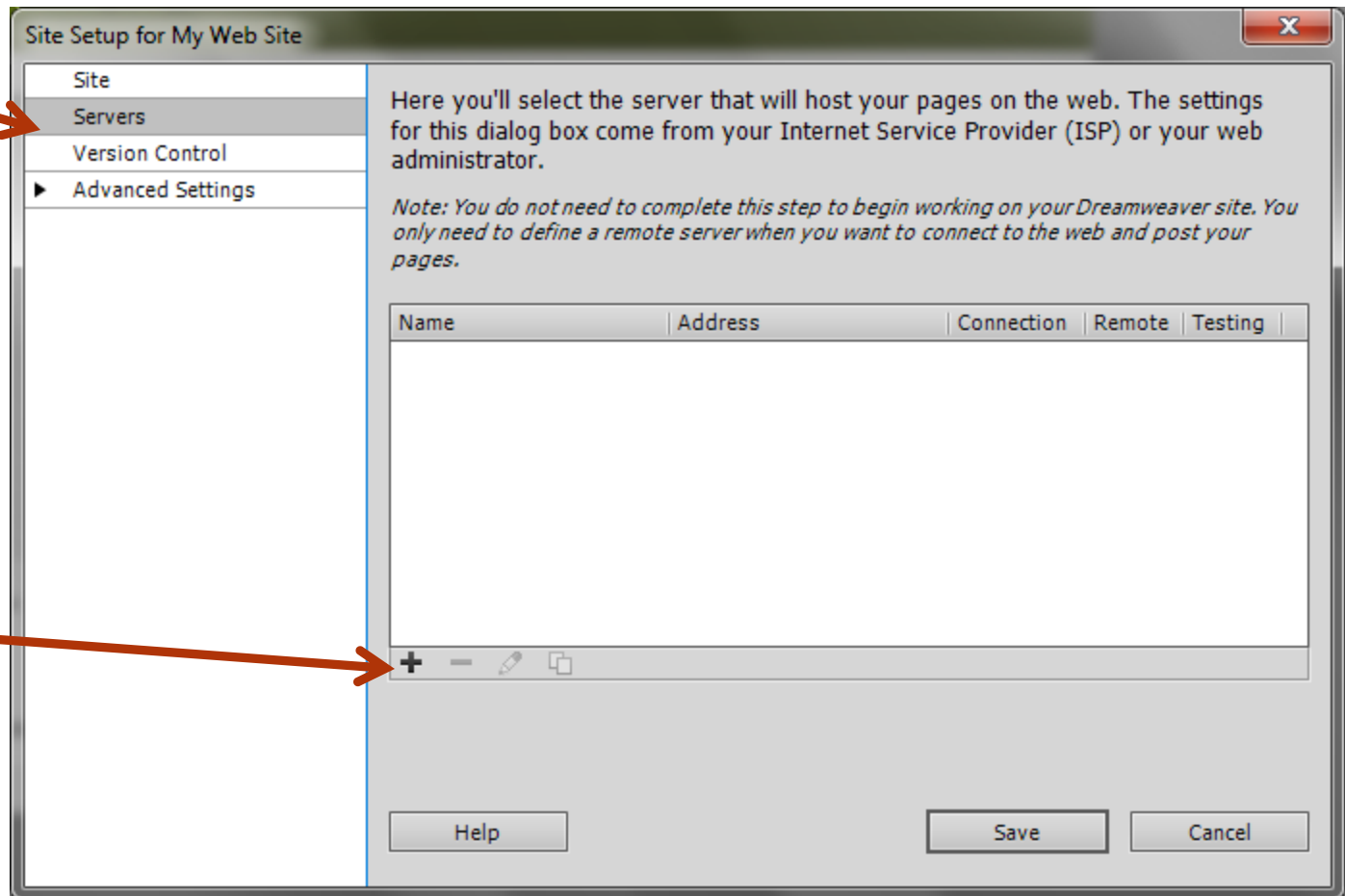
Help Save Cancel



You should see something like this....

Click on Servers
to setup
information for
the server
location







**For the Server information,
Enter the following:**

Name of Site: My Website

HTTP Address (URL):
<http://www.calvin.edu/~moodlename>

*Where it says moodlename, enter you Moodle login



Setting up the server

Make sure you
select SFTP

Moodle login
and password

public_html

The screenshot shows a 'Site Setup for My Web Site' dialog box with a sidebar on the left containing 'Site', 'Servers', 'Version Control', and 'Advanced Setting'. The 'Basic' tab is selected, showing the following fields: 'Server Name' (My webpage server), 'Connect using' (SFTP), 'SFTP Address' (webpub.calvin.edu), 'Port' (22), 'Username' (pmb4), 'Password' (masked with dots), 'Root Directory' (public_html), and 'Web URL' (http://www.calvin.edu/~pmb4/). There are 'Test', 'Save', and 'Cancel' buttons. Arrows from the text on the left point to the 'Connect using' dropdown, the 'Username' field, and the 'Root Directory' field.

Site Setup for My Web Site

Site
Servers
Version Control
► Advanced Setting

Basic Advanced

Server Name: My webpage server

Connect using: SFTP

SFTP Address: webpub.calvin.edu Port: 22

Username: pmb4

Password: ☒ Save

Test

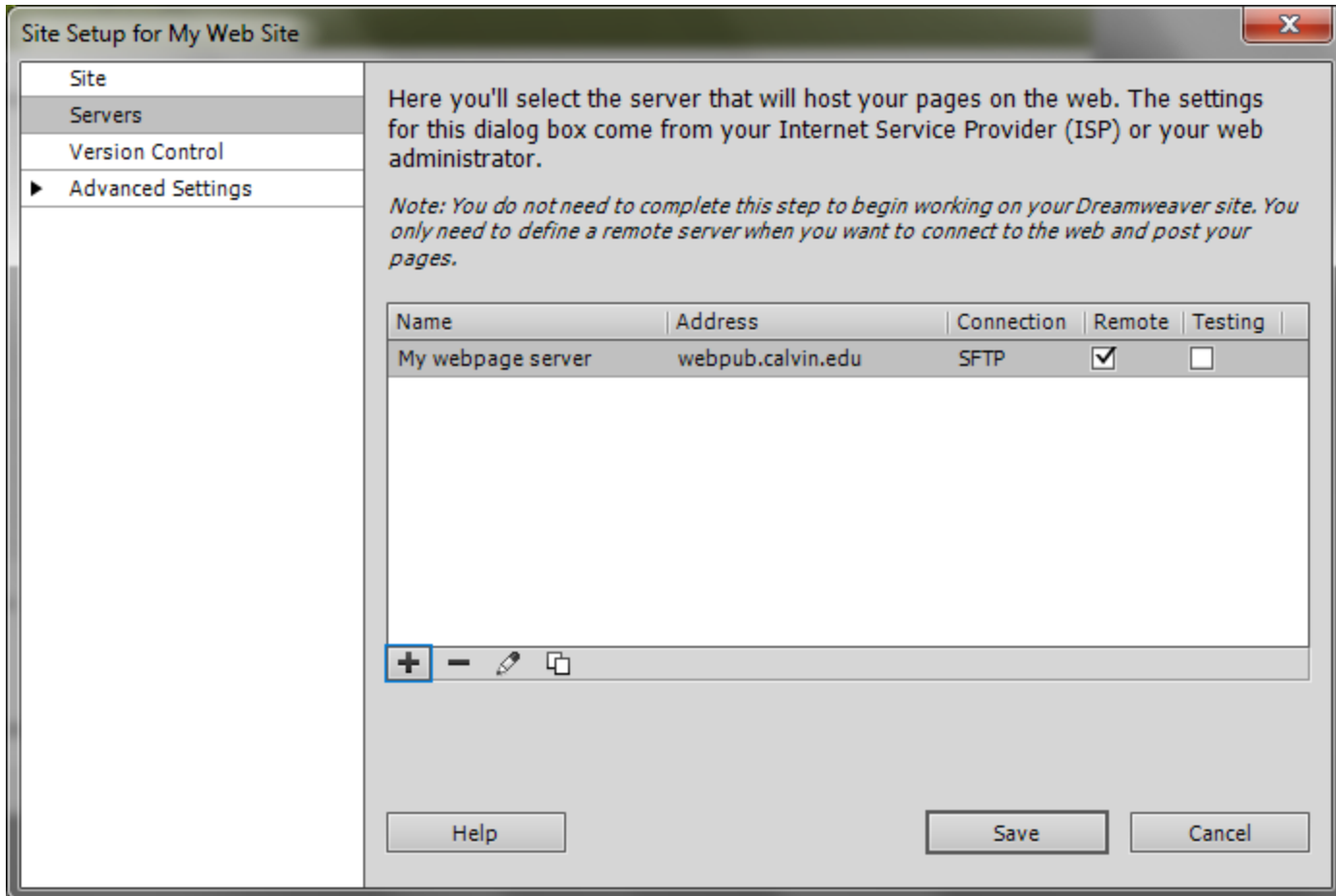
Root Directory: public_html

Web URL: http://www.calvin.edu/~pmb4/

Help Save Cancel



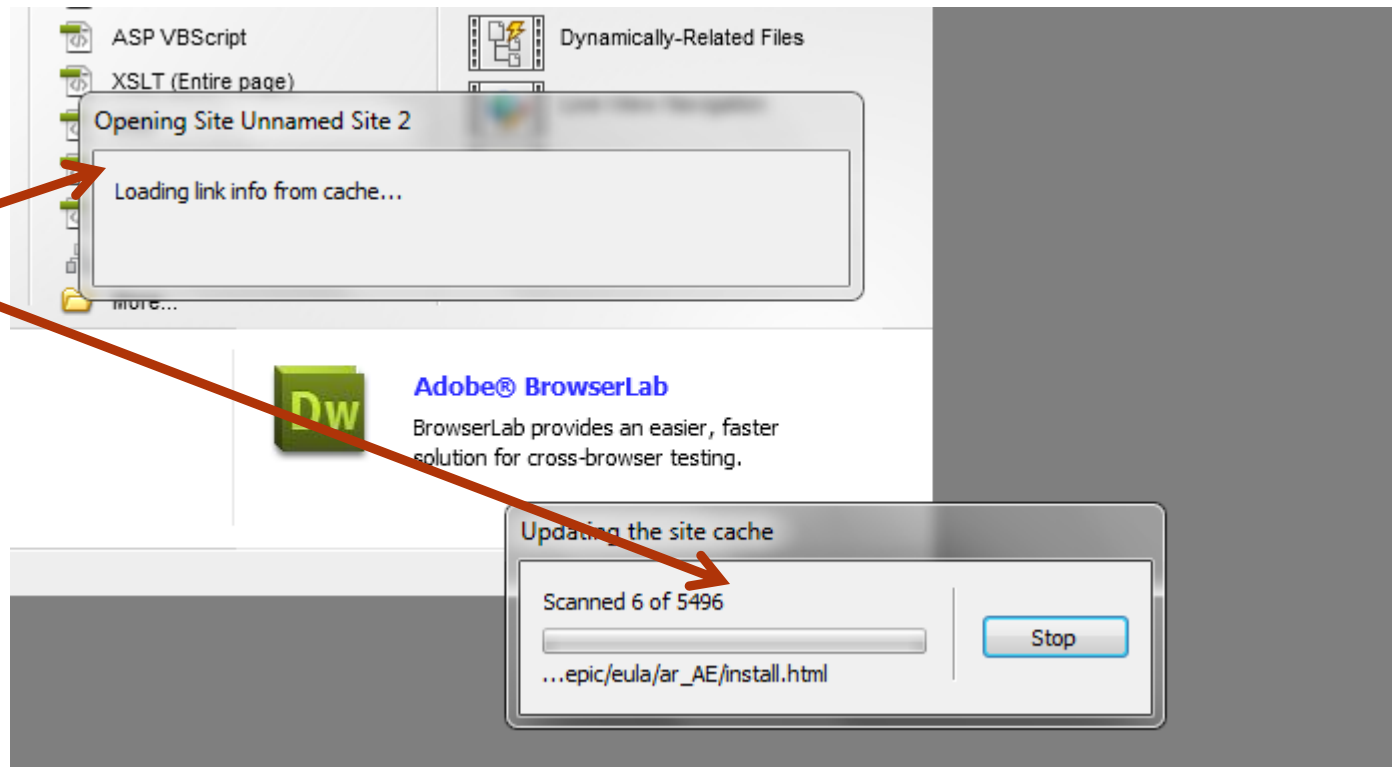
Click on Save





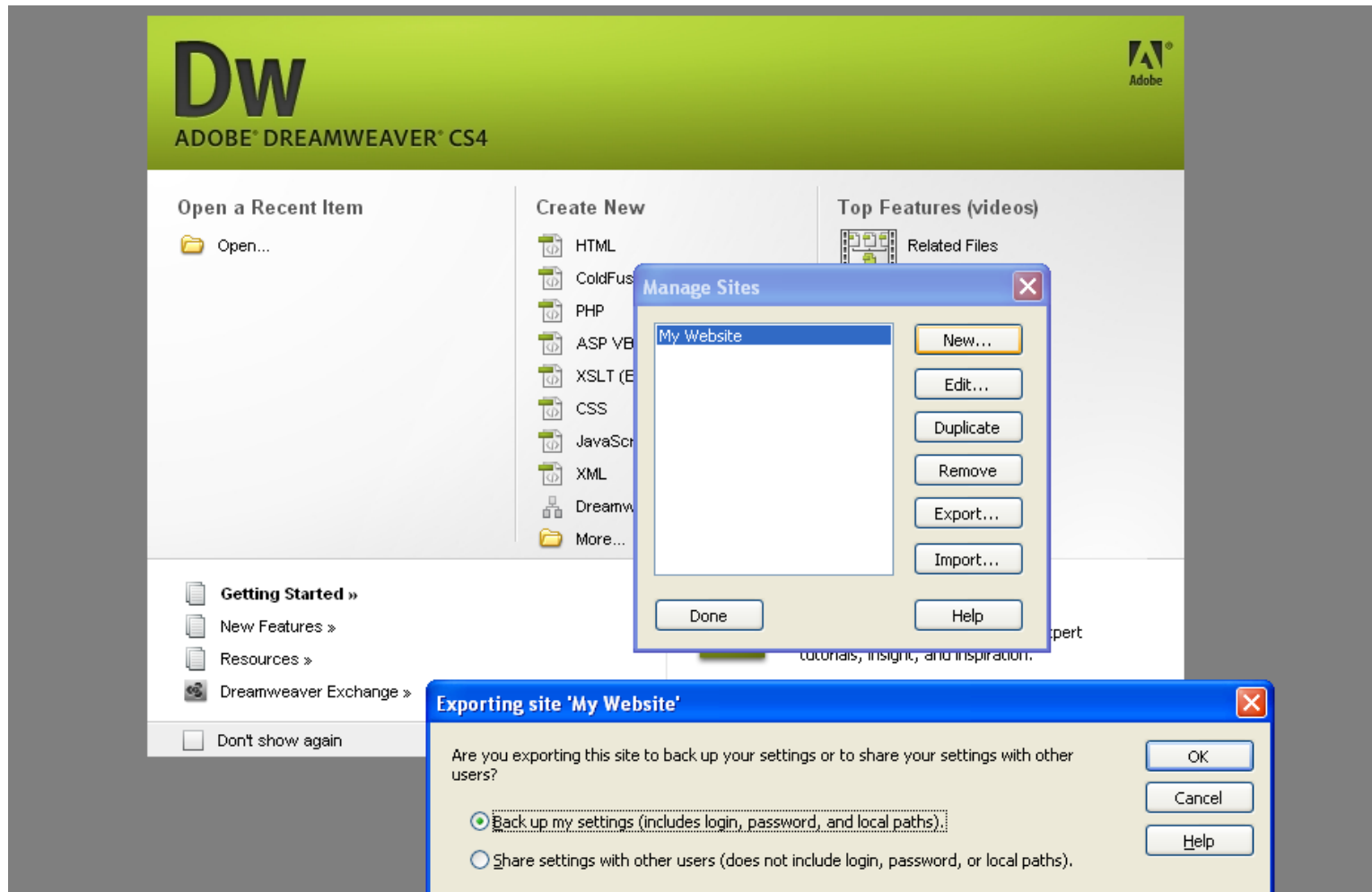
IDIS110 - RIT

Setup
information,
please wait.



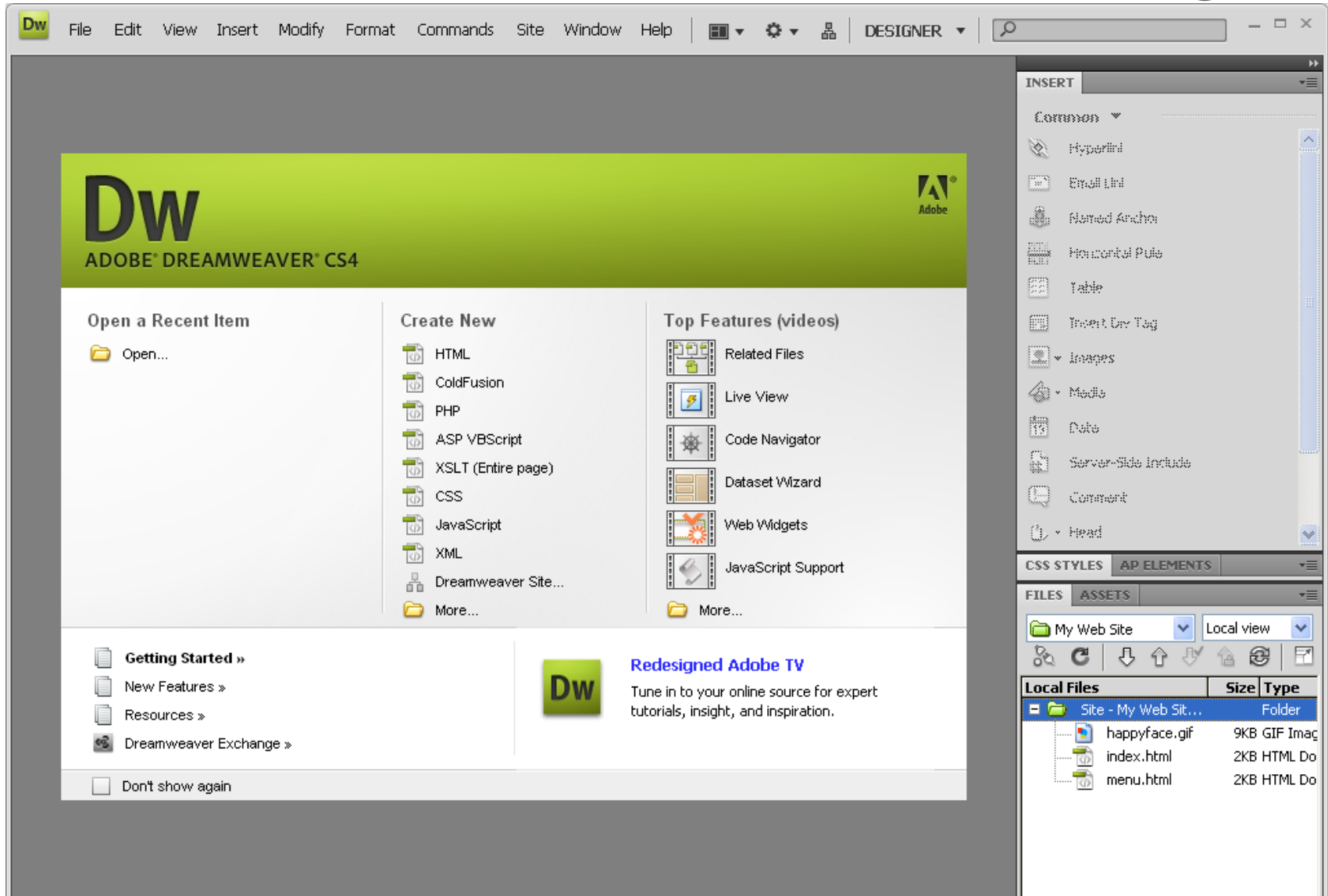


Finally, export what you did...





You should now see the following:





Next step

- If you have already created an index.html file (ie started your website), look to the right and double click on index.html
- This opens it up in your editor
- Now, to get started, click on the top line where you see a green folder and it says “My Website” (or the name of the folder you are using). It should have a solid blue bar over it. Then, click on the blue arrow. This starts copying your files to your Calvin website.
- You’ll be asked if you want to “put” the entire site. Click on “Okay”



And now

- You'll see a few dialog boxes with progress bars indicating the transfer is taking place.
- Now, go into a browser and enter `www.calvin.edu/~moodlename`
- Remember, substitute ~moodlename with your own
- You should now see your webpage.